

# Thermoflo

# PMP 210 Series 2

## Ratings

168,000 to 210,000 Btuh input

1.20 to 1.50 GPH #2 Fuel Oil



## High Input Packaged Multi-Position Oil Furnace

- **Multi-position installation**
  - Up flow (High Boy)
  - Horizontal - left or right
- **Heat exchanger**
  - Front flue
  - Heavy gauge stainless steel primary heat exchanger
  - Tube style aluminized steel secondary heat exchanger with removable baffles
  - Large front access clean-out secured with studs and nuts
  - Spring-loaded observation port with test plug
- **Blower**
  - Multi-speed direct drive
  - Slide-out blower/motor – easily removed for service
- **Cabinet**
  - Appliance finish powder coat paint
  - Rugged heavy gauge construction
  - Foil-faced insulation for hand-cool surface
- **Burner and controls**
  - Factory-wired
  - PSC motor
  - Solid state ignitor



# Thermoflo®

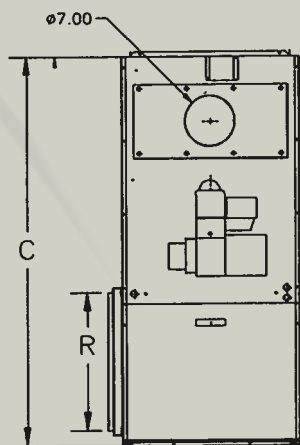
# RATINGS

Model	Input	Output	Firing rate	Installed Nozzle	AFUE	Blower size	Blower motor hp	Maximum cooling capacity	Ship wt.	Blower CFM	
	(Btuh)	(Btuh)	(GPH)					(tons)	(pounds)	@ 0.25" WC	@ 0.50" WC
<b>Direct-drive units</b>											
<b>PMP-210</b>	168,000	142,000	1.20		84.6	GT12-10	3/4	5	250	2200	2150
	189,000	158,000	1.35		83.0	GT12-10	3/4	5	250	2200	2150
	210,000	175,000	1.50	x	83.2	GT12-10	3/4	5	250	2300	2150

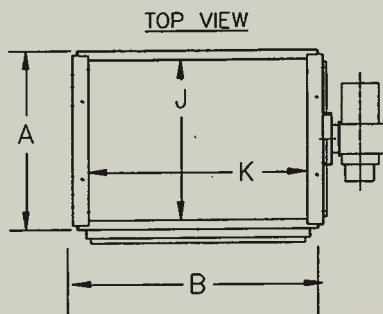
NOTE: Filter size required: PMP-210 - (1) 20" x 30"

# DIMENSIONS

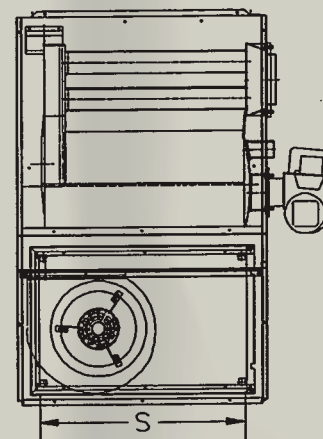
ALL DIMENSIONS IN INCHES



**FRONT VIEW**



**TOP VIEW**



**SIDE VIEW**

Model	Furnace casing			Warm air supply		Return air		Flue pipe diam.
	Width A	Depth B	Height C	Width J	Depth K	Width R	Depth S	
<b>PMP-210</b>	24	34	53	22	30	18	28	7

**Notes:**

PMP furnaces are approved for 2" clearance to combustible construction. For horizontal installations when installing on combustible floor, provide noncombustible spacer. Refer to installation manual for details and proper installation.

## EQUIPMENT

- Factory-assembled
- Heat exchanger pressure tested to assure leak-tight construction
- Heavy 14-gauge 430 stainless steel primary heat exchanger
- Aluminized steel secondary heat exchanger with flue collectors
- Rugged 20-gauge cabinet with powder coated finish
- Air conditioning fan center
- Controls mounted in blower compartment
- External filter rack provided
- Barometric damper provided
- High-efficiency flame retention burner (Beckett, Carlin, Riello)
- Optional two-stage fuel unit
- Dual spot limit controls

## WARRANTY

**Residential Use:**

- Limited lifetime warranty on heat exchanger
- 5-year limited warranty on parts
- Optional 5- or 10-year parts and labor warranty

**Commercial Use:**

- 5-year limited warranty on heat exchanger
- 3-year limited warranty on other components
- Optional 5- or 10-year parts and labor warranty



**Thermoflo®**

N93 W14635 Whittaker Way, Menomonee Falls, WI 53051

[www.williamson-thermoflo.com](http://www.williamson-thermoflo.com)

