

# Thermoflo

# GL

## 5 Sizes To Choose From



## Glass Lined

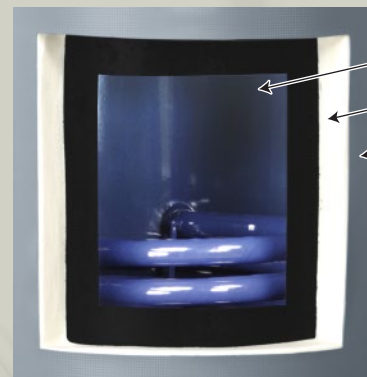
*Indirect - Fired Water Heaters*

### DESIGN FEATURES:

- ❑ Inspection opening provides easy access to clean & inspect tank.
- ❑ 2 inches of dense foam insulation, CFC free & environmentally safe
- ❑ Adjustable leveling legs
- ❑ Low off cycle losses
- ❑ Pressure relief valve provided
- ❑ Tank & coil are 100% air pressure/water tested
- ❑ Factory installed sacrificial magnesium anode rod.

### WARRANTY:

- ❑ 10-year residential warranty
- ❑ 7-year commercial warranty



Glass Lined Tank

2" Of Insulation

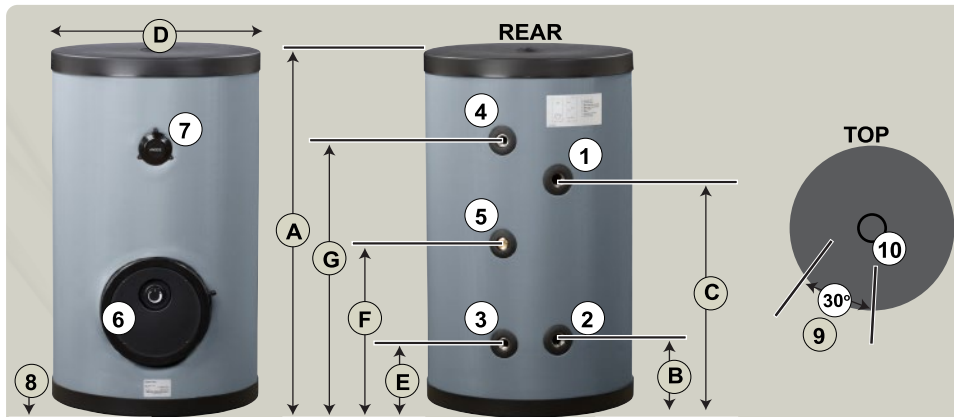
Durable Vinyl Jacket



# Thermoflo

# SPECIFICATIONS/DIMENSIONS

MODEL GL	Storage		Connections		Dimensions (inches)							Ship. weight (approx.)
	DHW side	Boiler side	DHW In/Out & Recirc.	Boiler water In/Out	A	B	C	D	E	F	G	
	Gallons	Gallons	Inches NPT	Inches NPT	Inches	Inches	Inches	Inches	Inches	Inches	Inches	Pounds
<b>32</b>	29.6	1.6	3/4	1	36 3/8	8 1/4	25 5/8	21 7/8	3 5/8	17 3/4	31 3/4	103
<b>42</b>	39.9	1.7	3/4	1	46 1/4	8 1/4	31 1/2	21 7/8	3 5/8	22 1/2	41 5/8	137
<b>53</b>	53.1	2.1	3/4	1	60	8 1/4	36 1/4	21 7/8	3 5/8	29 1/2	55 3/8	163
<b>80</b>	80.6	2.2	1	1	60	12 5/8	37 3/4	26	5 1/8	32	76	245
<b>105</b>	109.4	3.2	1	1	59 1/2	14 3/4	39 5/8	30	5 5/8	29 7/8	54	315



1. Boiler water inlet
2. Boiler water outlet
3. Cold domestic water inlet
4. Hot domestic water outlet
5. Domestic water recirculation line
6. Inspection hatch with thermostat adjustment knob
7. Magnesium anode (use only the anode supplied with the water heater)
8. Adjustable leg adjustment range= 5/8" to 1 1/4" (add this amount to the height dimensions for total height from floor)
9. Angle between boiler water connections and domestic water connections
10. Connection for T&P valve (3/4") — valve supplied loose with the water heater; field installed

## AHRI Certified Ratings

MODEL GL	180° F boiler water entering   58° F to 135° F domestic water						
	First Hour Rating	Continuous Draw Rating	Minimum Heat Output Rate	Minimum Heat Source Flow Rate	Heat Source Friction Loss	First Draw Rating	Standby Loss
	GPH	GPH	Btu/hr	GPM	Feet w.c.	GPH	Degrees F per hour
<b>32</b>	160	140	115	10	2.5	20	1.5
<b>42</b>	201	176	125	11	4.0	25	1.2
<b>53</b>	229	189	140	12	7.7	40	1.0
<b>80</b>	237	192	175	12	6.5	45	0.8
<b>105</b>	340	280	220	14	8.0	60	0.7



These ratings were obtained with a heat source output rate and heat source flow rate as noted in chart. Other results will be obtained under different conditions.

## Additional Ratings

Boiler Heating Capacity (MBH)	First Hour Rating Capacity (GPH) - Boiler Water Supply at 180°F - domestic water supplied at 115°F or 140°F - inlet water temperature 50°F									
	GL-32		GL-42		GL-53		GL-80		GL-105	
	115°F	140°F	115°F	140°F	115°F	140°F	115°F	140°F	115°F	140°F
50	122	96	124	98	139	113	162	136	173	147
70	159	123	161	125	176	140	199	163	210	174
90	196	133	198	152	213	167	236	190	247	201
110	203	133	235	161	251	187	274	217	284	228
130	203	133	248	161	281	187	311	225	321	255
150	203	133	248	161	281	187	330	225	358	282
170	203	133	248	161	281	187	330	225	396	308
190	203	133	248	161	281	187	330	225	433	310
210	203	133	248	161	281	187	330	225	464	310
250	203	133	248	161	281	187	330	225	464	310
300	203	133	248	161	281	187	330	225	464	310
350	203	133	248	161	281	187	330	225	464	310
400	203	133	248	161	281	187	330	225	464	310
450	203	133	248	161	281	187	330	225	464	310
500	203	133	248	161	281	187	330	225	464	310
<b>Minimum GPM</b>	<b>8 @ 1.6 ft wc</b>		<b>8 @ 1.6 ft wc</b>		<b>8 @ 2.9 ft wc</b>		<b>14 @ 4.2 ft wc</b>		<b>14 @ 6.6 ft wc</b>	

In the interest of continual improvement in product and performance, Thermoflo reserves the right to change specifications without notice.

