



CLB Oil Furnace

Centennial Low Boy

- ❑ Heat exchanger
 - Heaviest in the industry
 - Interior baffling for maximum efficiency
 - Front flue or rear flue
 - Dual front cleanout ports for easy service and maintenance
- ❑ Blower
 - Squirrel cage style, resilient mounted
 - Belt drive or multi-speed direct drive
 - Heavy-duty for continuous operation
 - Slide-out blower/motor assembly — easily removed for service
- ❑ Cabinet
 - Heavy-gauge with "Seal-Tite" construction
 - Foil-face insulation for "hand-cool" surface
 - Burner and controls completely enclosed
 - Easy-access door panel
- ❑ Combustion chamber
 - Slide-out for easy service
- ❑ Burner and controls
 - Factory-wired
 - Flame-retention burner
 - Simple "plug-in" burner connection
 - PSC motor
 - Solid state igniter

- ❑ 84,000 to 245,000 Btuh Input
0.60 to 1.75 GPH #2 Fuel oil
- ❑ AFUE's 82.5% to 85.9%
- ❑ Direct or Belt Drive



Thermoflo
A United Dominion Company



RATINGS

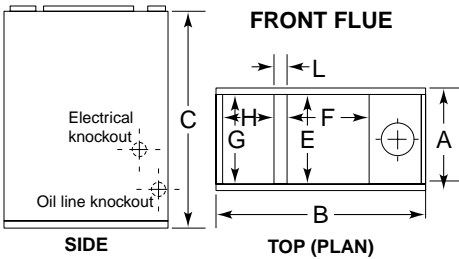


Model	Input	Output	Firing rate	Installed nozzle	AFUE	Blower size	Blower motor hp	Blower pulley	Motor pulley	Belt size	Maximum cooling capacity	Ship wt.	Blower CFM	
	(Btuh)	(Btuh)	(GPH)								(tons)	(pounds)	@ 0.25" WC	@ 0.50" WC
Direct-drive units														
CLB-105	85,000	75,000	0.60		85.9	100-10T	1/2	-	-	-	4	325	1600	1350
	105,000	91,500	0.75	✓	85.4	100-10T	1/2	-	-	-	4	325	1600	1350
	120,000	105,000	0.85		85.0	100-10T	1/2	-	-	-	4	325	1600	1350
CLB-140	140,000	120,000	1.00	✓	85.0	120-12T	3/4	-	-	-	5	410	2000	1750
	175,000	148,500	1.25		84.2	120-12T	3/4	-	-	-	5	410	2000	1750
Belt-drive units														
CLB-105	85,000	75,000	0.60		85.9	10-T	1/3	6 x 3/4	3 1/4 x 1/2	37	2 1/2	325	1200	900
	105,000	91,500	0.75	✓	85.4	10-T	1/3	6 x 3/4	3 1/4 x 1/2	37	2 1/2	325	1200	900
	120,000	105,000	0.85		85.0	10-T	1/3	6 x 3/4	3 1/4 x 1/2	37	2 1/2	325	1200	900
CLB-140	140,000	120,000	1.00	✓	85.0	12-T	1/2	7 x 3/4	3 1/4 x 1/2	40	4	410	1600	1200
	175,000	148,500	1.25		84.2	12-T	1/2	7 x 3/4	3 1/4 x 1/2	40	4	410	1600	1200
CLB-210*	210,000	176,500	1.50	✓	83.8	15-T	3/4	10 x 1	3 1/4 x 5/8	51	7 1/2	690	3800	3000
CLB-245*	245,000	204,500	1.75	✓	82.5	15-T	3/4	10 x 1	3 1/4 x 5/8	51	7 1/2	690	3800	3000

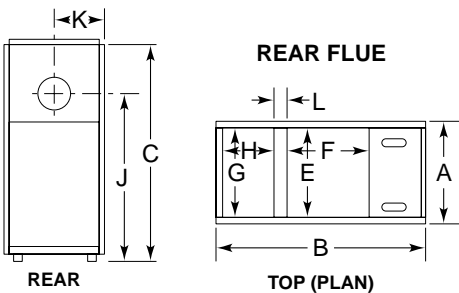
* CLB-210 and CLB-245 are shipped knocked down for field assembly

DIMENSIONS

ALL DIMENSIONS IN INCHES



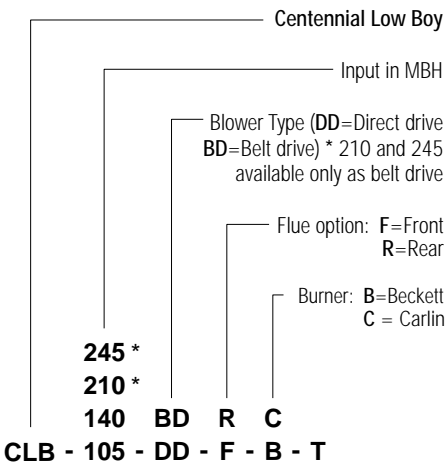
Model	Furnace casing			Warm air supply (top)		Return air (top)		Location of flue pipe (rear flue only)		Plenum spacing L	Flue pipe diam.
	Width A	Depth B	Height C	Width E	Depth F	Width G	Depth H	Height J	Depth K		
CLB-105	20 1/2	48 1/2	45 1/2	18 1/4	17 1/2	18 1/4	15 1/4	37	10 1/4	2	6
CLB-140	25 1/4	52 1/2	46	23	21 1/2	23	13 1/2	43	12 5/8	4 1/2	6
CLB-210	33	64	52	28 1/2	29 3/4	28 1/2	17	45	16 1/2	4 1/2	8
CLB-245	33	64	52	28 1/2	29 3/4	28 1/2	17	45	16 1/2	4 1/2	8



EQUIPMENT

- Factory-assembled
- Fully-enclosed burner and controls
- 10-gauge primary heat exchanger
- Rugged 20-gauge cabinet with powder coat finish
- Large, easily-accessible heat exchanger cleanouts
- Barometric damper
- Belt-drive or multi-speed direct-drive blower
- Honeywell controls standard
- Air conditioning fan center standard on direct-drive models
- Integral leveling base standard on most models
- Made in the USA
- CLB-210 and -245 require field assembly

ORDER CODE



Heat Exchanger

- The heat exchanger is made of heavy hot-rolled steel for durability, sturdiness and quiet operation
- Tested to assure leak tight construction
- Designed for efficiency, long life and dependable service
- Outer surfaces streamlined to provide smooth, friction-free passage of air over heated surfaces
- Extra heating surface provided by wrap-around radiator. More heat goes into the home . . . less up the chimney.

Oil Burner

- Pressure-atomizing type with flame retention head
- Quiet and efficient
- Designed for economical performance
- Slide-out combustion chamber for easy service
- PSC motor
- Solid state igniter

WARRANTY

- Limited lifetime warranty on heat exchanger
- 5-year limited warranty on parts
- Optional 5- or 10-year parts and labor warranty



Thermoflo

A United Dominion Company

8155 N. 76th St. • Milwaukee, WI 53223

www.williamson-thermoflo.com Form T-602(10/00)